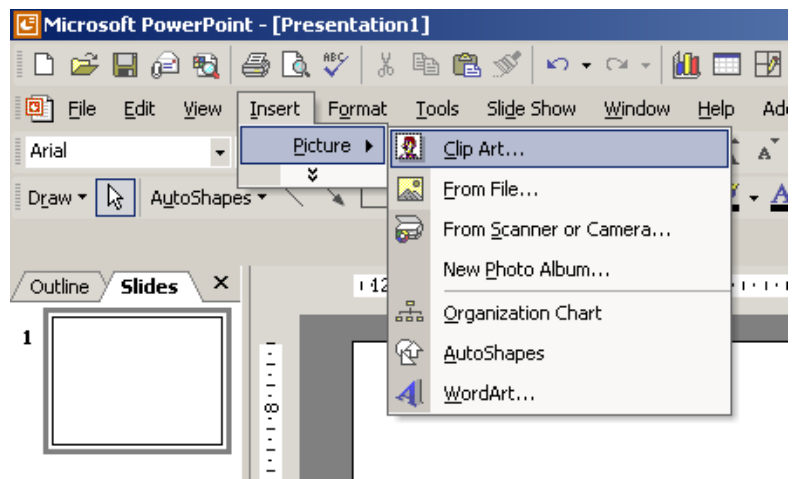


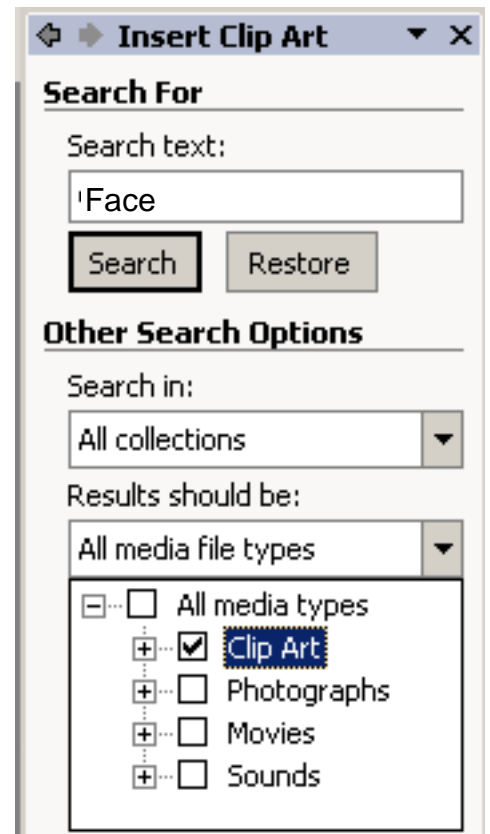
Converting clipart to corel draw

- 1.) Open up PowerPoint, then click on the 'Insert > Picture > From Clipart' option. You will now see a insert clipart panel on the right of your screen.

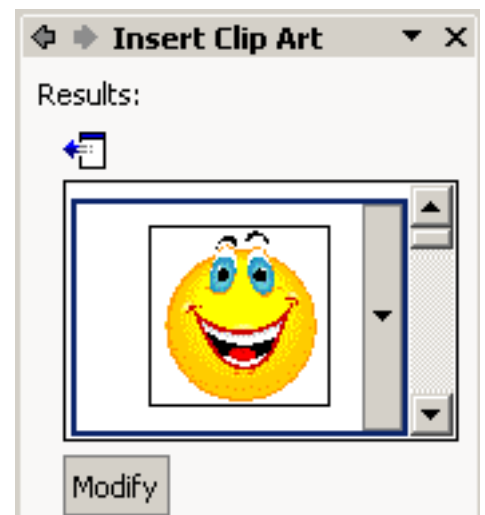
(Note on some machines you can search the online clipart but sometimes it does not work. If it works make sure you search on clipart only!)



- 2.) Now enter in what clipart you are searching for. Microsoft clipart only works with a single word such as 'face' two words will not work. Next select 'clipart' only. You can now search for your clipart.

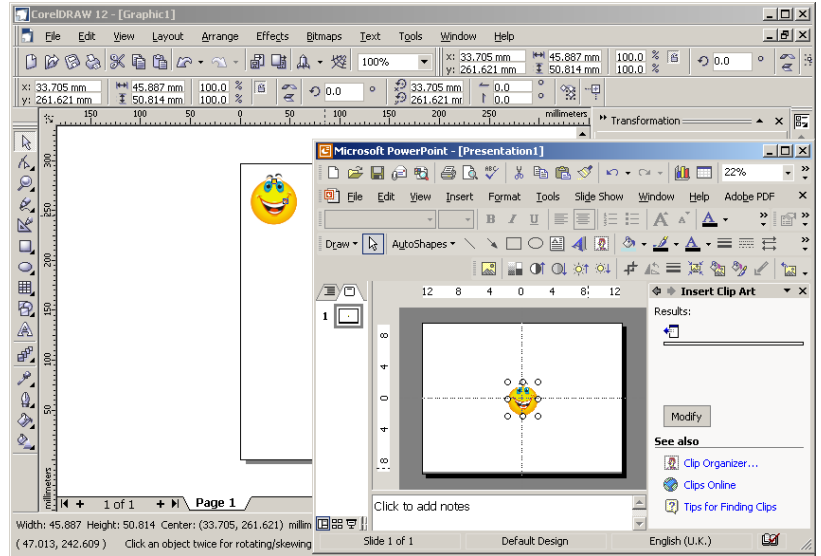


- 3.) Now press search then double click on your clip art and it will appear in PowerPoint's main window.

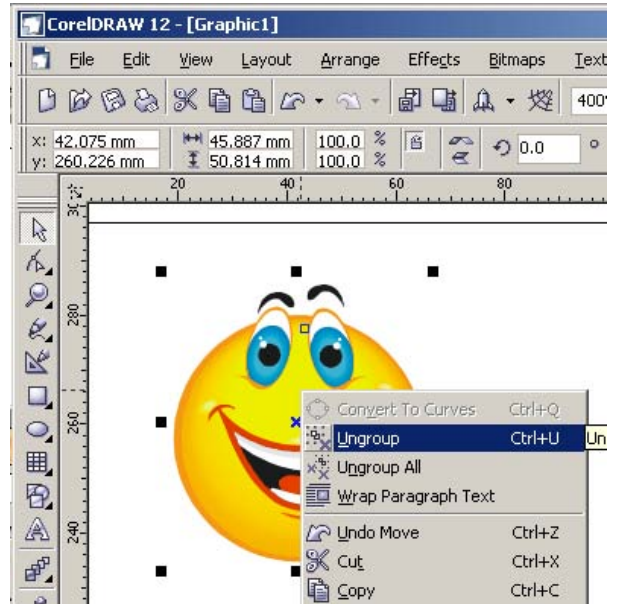


Converting clipart to corel draw

4.) Now make PowerPoint small and make sure it overlaps Corel Draw now drag your clipart into Corel Draw, or copy and paste into Corel Draw!



5.) Now using the arrow tool right click on the clipart and select 'ungroup'. You can now delete sections on the clipart. Now clear away all the extra colour until you are left with something that you can engrave.



6.) Next I removed all the excess clipart and made all the remaining art black. I selected each section or line and clicked in the corner on its fill or line colour and made it black. I then redrew a circle around the clipart. Remember black can be engraved by the laser cutter. My downloaded clipart can now be engraved!

Note: This is good for small icons and engraved work, however you must trace your main graphics in Corel draw in order to get top marks otherwise you will just be copying!!!

