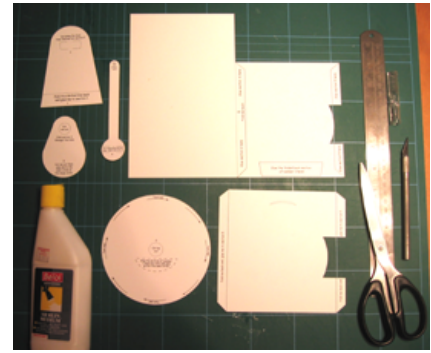
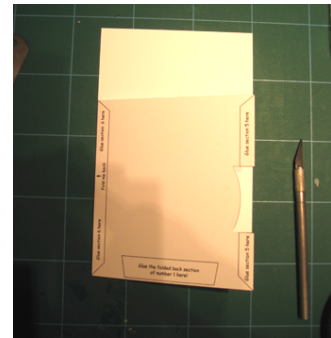


Rotating pop up card instructions (Sheet 1 of 2)

Step 1 - First get a steel rule a craft knife and a cutting mat. Now cut out all six pieces of your rotating pop up card.



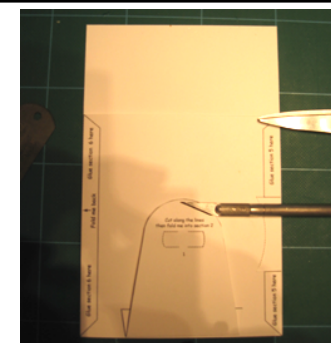
Step 2 - Now select the large card. Now score along the dotted line and fold the card back.



Step 3 - Next select piece 1. Now cut along the dotted lines with a craft knife. Ensure you leave the gap in the centre. These two flaps will slot into the large wheel. Next score lightly along the bottom of piece 1 and fold the glue panel back.



Step 4 - Now glue the glue panel onto the front of your large card. Ensure the panel is glued at the base of the card where it says glue panel 1 here.

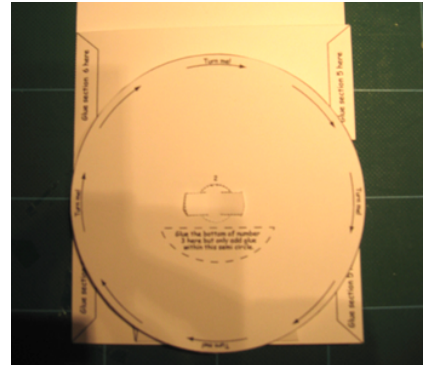


Step 5 - Now select the large wheel and cut out the circle within the middle.

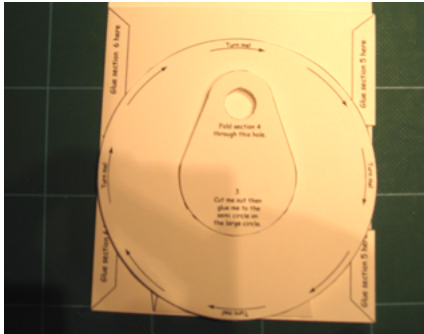


Rotating pop up card instructions (Sheet 2 of 2)

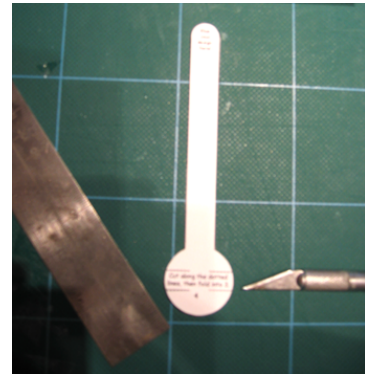
Step 6 - Now get the large circle which is piece 2 and push the flaps of piece one through. The wheel will now be able to turn try it.



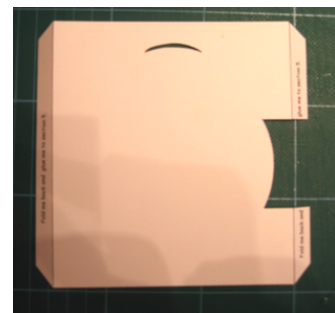
Step 7 - Now add glue to the large circle. Only add glue within the small semi circle. Next cut out the hole within piece 3. Now push piece 3 over the glue and leave it to dry like so.



Step 8 - Now cut along the dotted lines on piece 4 to create two flaps. Do not cut all the way along! Then push the two flaps into the hole on piece 3. Let the glue dry before you turn the wheel.



Step 9 - Now cut out the small semi circle gap and the 'cut me out' section like so. Then score along all the lines and fold back the pieces.



Step 10 - Now push the top of piece 4 through the small semi circle gap. Then glue on the flaps to the front of the card. Be careful not to get glue on the wheel. Let the card dry for 10 mins before you try it. You can now add your design piece to the top of piece 4. Well done now decorate your card!

