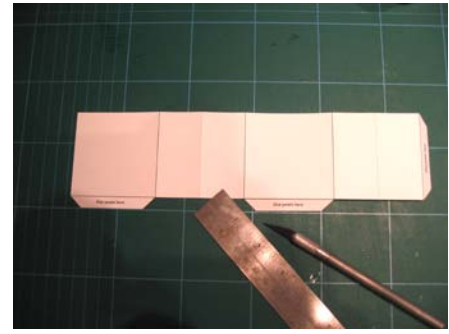


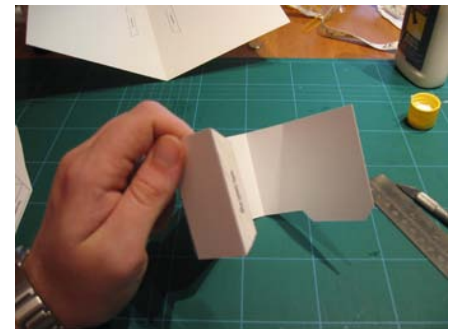
Pop Up Cafe instructions (Sheet 1 of 2)

Step 1 - First get a steel rule a craft knife and a cutting mat. Now cut out all the three shapes from the two sheets. Now using a steel ruler and a craft knife lightly cut along all black lines and dotted lines.

Note: You should now decorate your diner before you glue it together.



Step 2 - Now fold back the square house shape along all the score lines. Then apply glue to the flap.



Step 3 - Now glue the flap to the inside of your house. Make sure the score lines (grey dotted lines) fold out of the house not inside the house.



Step 4 - Now on the large card lightly score down the middle with a steel rule and a craft knife. Now fold the card in half and then open it again. Now add some glue to the two flap marks in the centre of the sheet.



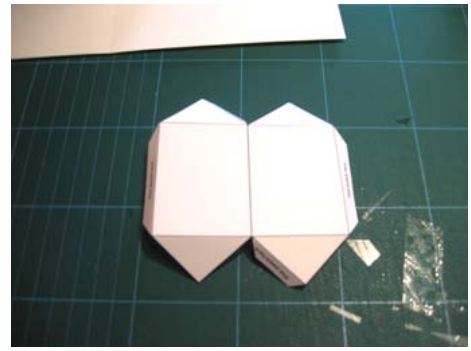
Step 5 - Now glue the square in the centre of the card. Glue the two flaps onto the two flap guides.

Note: you will have to leave this to dry for 10 minutes.

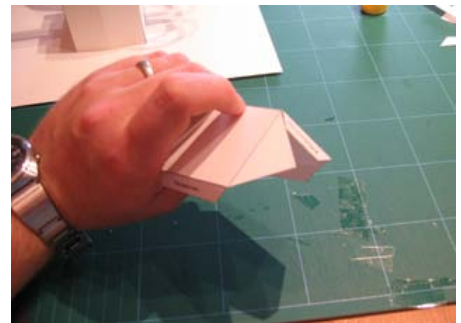


Pop Up Cafe instructions (Sheet 2 of 2)

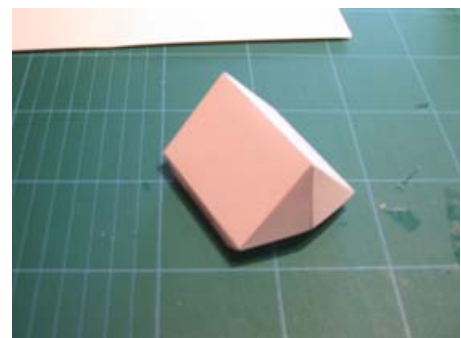
Step 6 - Now we will move onto the roof. Cut out your roof, then score along all the lines. Now fold back all the sections so the bend easier when they go into the pop up card.



Step 7 - Now glue the roof panel tabs underneath each other so you get a tent shape.



Step 8 - Leave your tent shape to dry for 10 minutes.



Step 9 - Now add glue to the roof glue pads and glue them into the house. Again you will need to let this dry for 10 mins before you fold it.



Step 10 - Well done! Your card is now ready. Fold your card back and go over the crease again.

